

STEP 1

Hardware Installation

- 1** Plug the included Ethernet network cable into the computer's Ethernet port.



- 2** Plug the other end of this cable into the Ethernet port of the Bridge.

Plug type

Inlet type



- 3** Plug the Bridge into an electrical outlet. (**Plug type**)
Plug the electrical cable into electrical port. (**Inlet type**)

! Important

Because the Bridge sends data over the power lines of your house, plug the Bridge directly into an electrical outlet. It's recommended not to plug the device into a power strip with surge protection. And do not plug the device into UPS. The Bridge has its own power filter for protection against surges.

Plug type



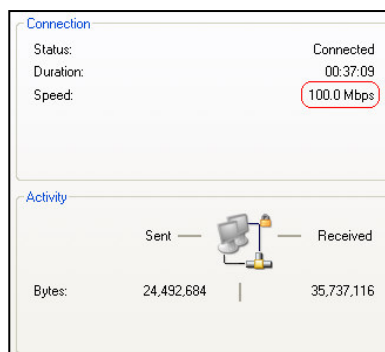
Inlet type



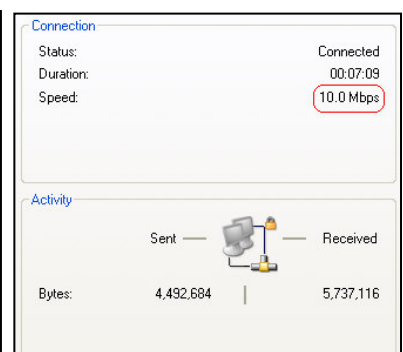
Plug the other end of this cable into an electrical outlet

The installation of the Bridge is complete. If you want to configure the Bridge, proceed to **Software Installation**.

Note: If you want to distinguish the turbo's adapter from 14 M's adapter, you can go to the Network Connections of Control Panel. And open the Connection which one is connecting and also finish the hardware installation. You can check the connection speed is 100.0 Mbps, but 14M will show 10.0Mbps.



Turbo type



14M type

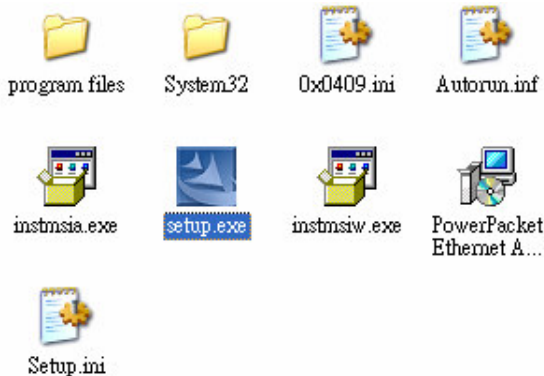
STEP 2

Software Installation

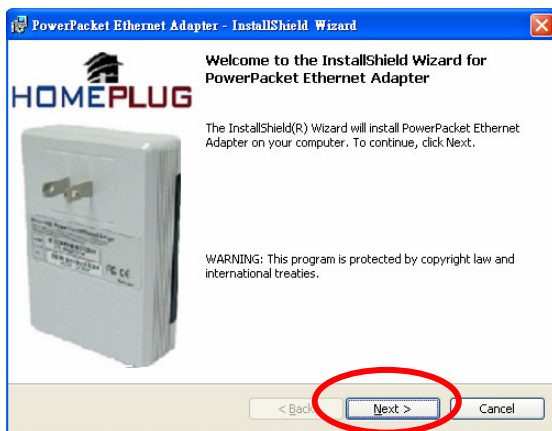
Note: Utility can be installed in Windows98 , Windows Me , Windows 2000 , Windows NT, Windows XP, Windows 2003 Server

Installing the PowerLine Configuration Utility

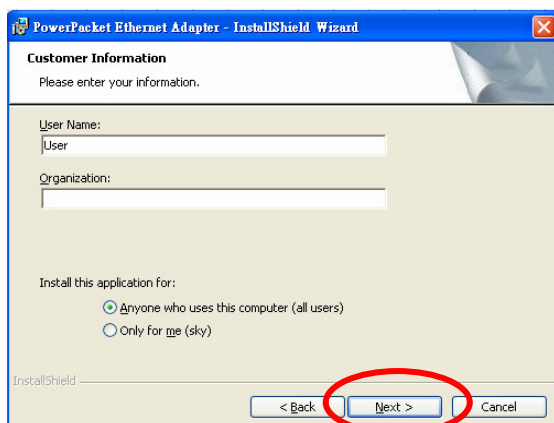
1 Insert the included utility CD into the CD-ROM drive of your computer and then click Setup.exe to continue.



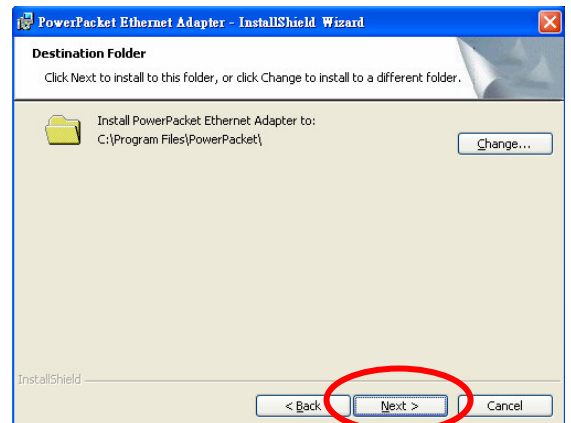
2 Click **Next** to continue.



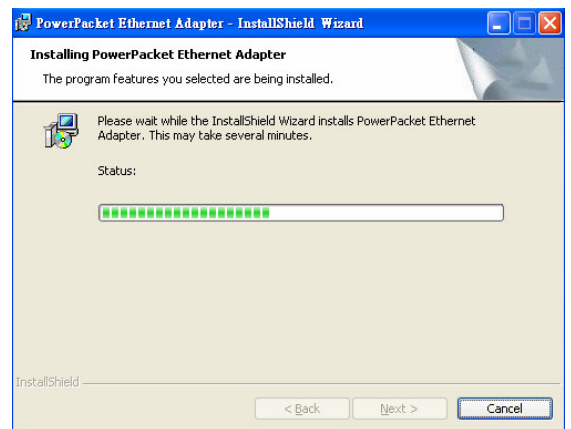
3 Enter your information and click **Next**.



4 The system will automatically search for the destination location, just click **Next** to continue.



5 Wait for the finish status.



6 Click **Finish** to complete the installation. To run the PowerPacket utility on the windows's desktop.

